



MARITIME
ASSETS

VESSELS, PEOPLE AND ASSET PROTECTION



M.V. Ivero

M.V. Ivero is providing a unique platform for multidisciplinary seabed surveys in the coastal and near shore zone. The vessel fills the gap between small coastal and large offshore survey vessels providing a cost effective solution for many applications.

The vessel's unique features include 24h/day operations, fuel efficiency, 22-berths, 10t a-frame, bow thrusters, large backdeck, USBL positioning pole, and with the potential to operate multiple geo-scientific survey resources.

The vessel also benefits from a dedicated survey and data processing-laboratory enabling data to be processed and reviewed offshore.

Having a large hydraulic 10t a-frame on this type of vessel is exceptional and enables the vessel to safely operate a range of heavy-duty seabed coring and in situ (CPT) equipment. Equipped with bow thrusters the vessel is able to hold station without resorting to anchoring, enabling high levels of production to be achieved.

Using a single vessel on a project to complete different tasks, such as geophysics, environmental, and geotechnics, affords the client the opportunity to save both time and cost.

M.V. Ivero has been designed to support the following key areas:

- Offshore wind farm site surveys
- Offshore wind farm inter-array and export cable route surveys
- Wave and tidal energy seabed surveys
- Telecom cable route surveys
- Environmental surveys
- Oceanographic Instrument deployment and recovery
- Unexploded ordnance surveys
- Marine aggregate and mineral surveys
- Port development surveys
- Nearshore pipeline route surveys
- Cable depth of burial surveys

Vessel details

Specifications

Name	M.V. Ivero
Type	Multi-Discipline survey
Year of build	1982
Reconfigured	2011
Classification	Lloyds Register
Call sign	PCKA

Dimensions

Length overall	34m
Beam	9m
Draft	3.2m
GRT	288
NRT	92

Accommodation

Berths	22 including crew
Survey lab	1 x 25m ²
Workshop	1 x 12m ²

Propulsion and machinery

Main engine	2 x Kelvin TBSC 8 388 kW each
Auxiliary eng	2 x 85kW 1 x 275kVA
Bow thrusters	1 x Transverse 210 hp
Power	380/220V 50 Hz
Maximum speed	10 knots

Capacities

Fresh water	122m ³
Fuel oil	132m ³
Endurance	28 days

Fuel consumption

Survey approx.	1-1.2t/day
Steaming approx.	1.5-1.75t/d
Standby at sea approx .	0.8-1t/day

Navigation

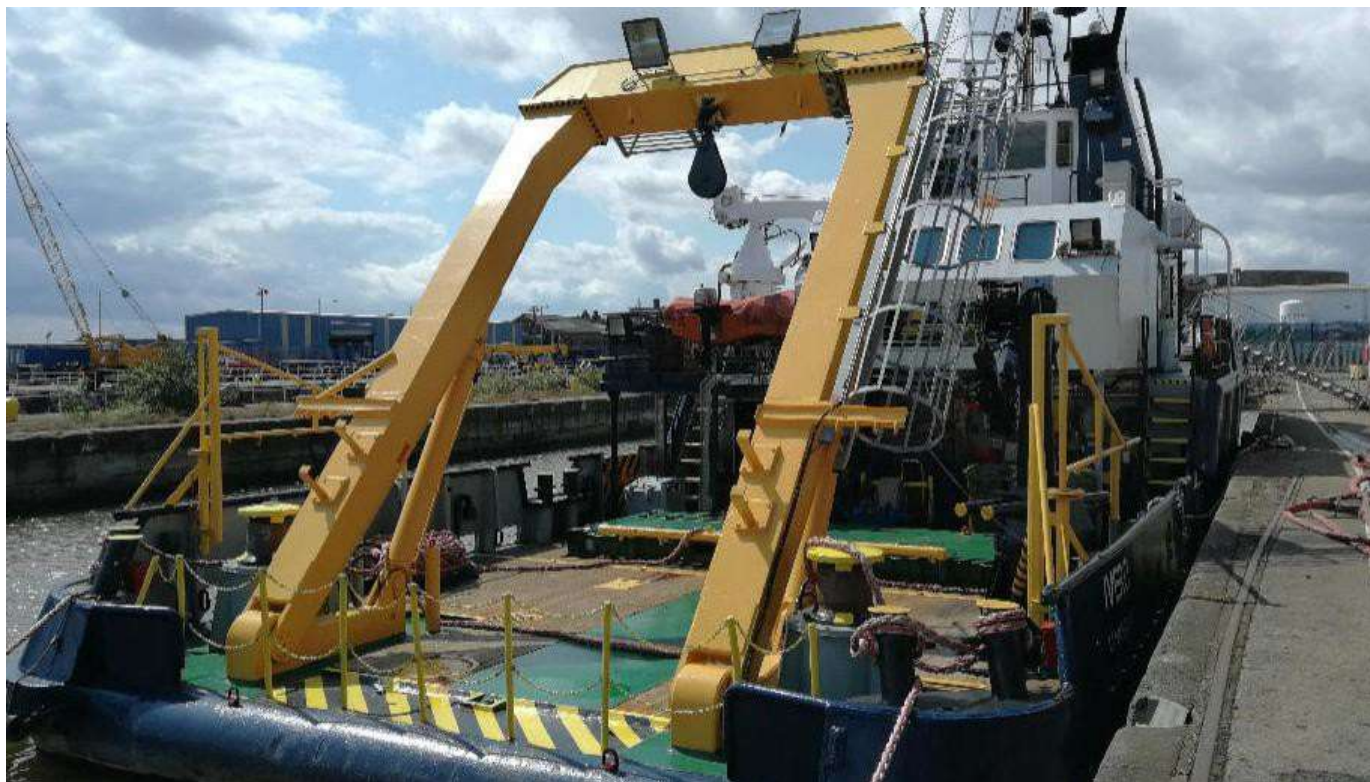
System	DGPS OmniSTAR VBS
USBL	Moon pool available
Gyro	TSS Meridian

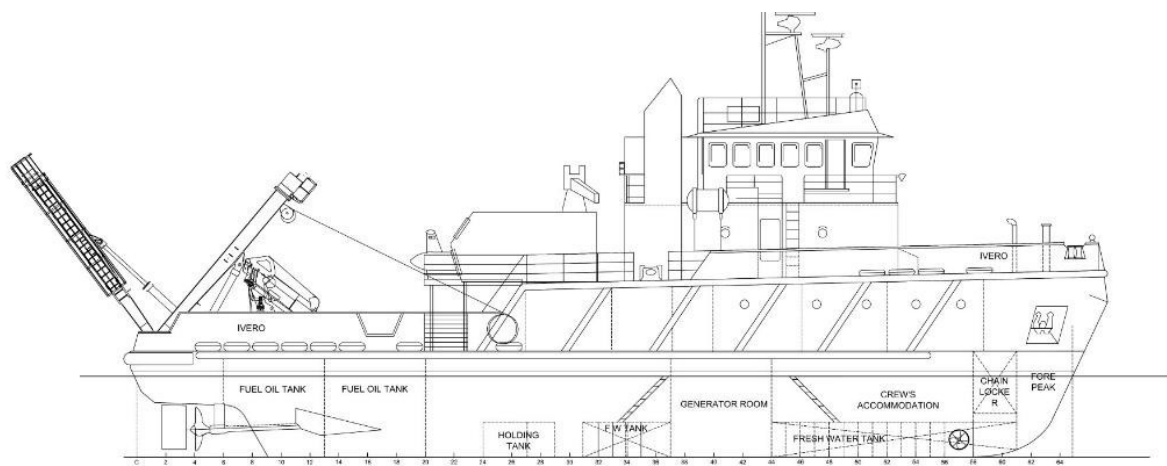
Safety equipment

Life rafts	2 x 25 person
MOB boat	1 x 6 person
Immersion suits	24
Life jackets	26
EPIRB	1 x 406 MHz sailor
SARTS	1 x McMurdo
Portable VHF	2 x sailor
Line throwing	1
Smoke detection	1

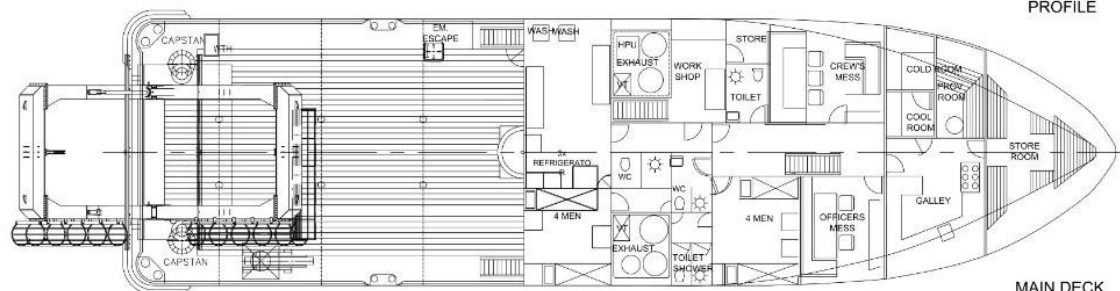
Deck area

A-frame	20-t SWL 7.4m clearance 4m outreach
Crane (port)	MOB boat only
Crane (starboard)	18t/m
Aft deck	142m ² ISO twist locks

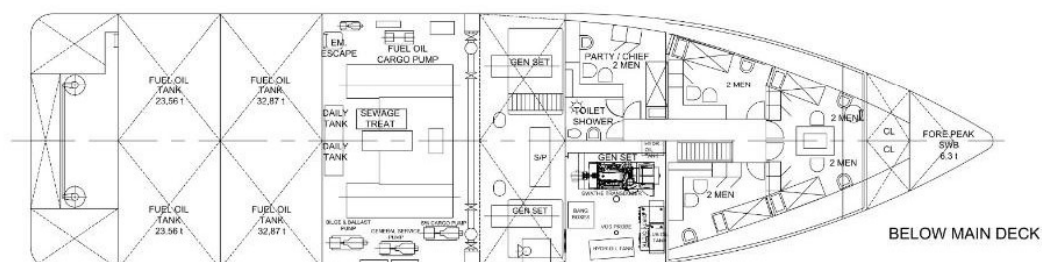




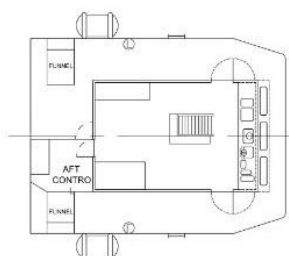
PROFILE



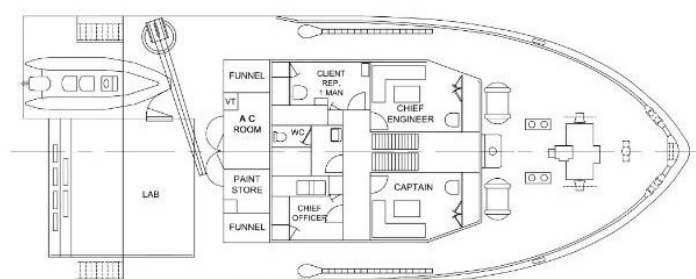
MAIN DECK



BELOW MAIN DECK



WHEELHOUSE DECK



FORECASTLE DECK

